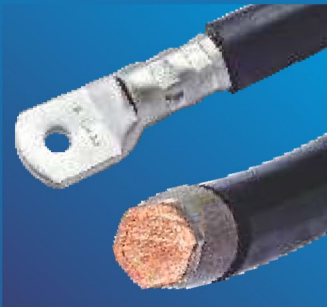




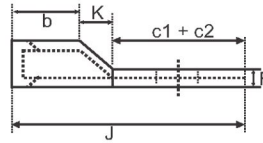
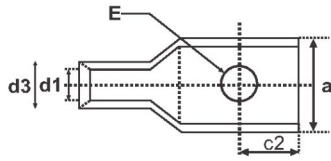
UL Listed Product Catalog 2014



a GROUP CRYSTAL
ENTERPRISES

www.groupcrystal.com

COPPER ONE HOLE SHORT BARREL SERIES COLOR CODED



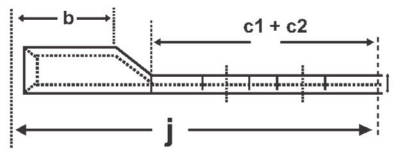
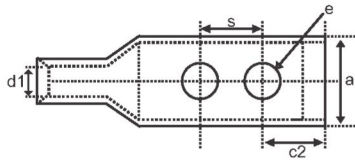
File No.: E328465

CAT NO.	Wire Range	Stud Size	Colour Code	d1	d3	J	b	a	F	E	c2	c1 + c2	K	TOOL & DIE REFERENCE	NO. OF CRIMPS	STRIP LENGTH
CE 001	8	#10	RED	4.4	6.9	30.5	12.5	10.7	2	5.3	7	15	3	M=MH-14	2	10mm
CE 002		1/4	RED							6.4						
CE 003	6	#10	BLUE	5.2	7.5	38.0	18.0	10.7	2.1	5.3	7.5	17	3	M=MH-14	2	16mm
CE 004		1/4	BLUE							6.4						
CE 005		5/16	BLUE							8.4						
CE 006	4	#10	GREY	6.4	8.7	38.0	18.0	12.4	2	5.3	8	17	3	I=ECO50 DIE.UL087	2	16mm
CE 008		1/4	GREY							6.4						
CE 009		5/16	GREY							8.4						
CE 010		3/8	GREY							10.5						
CE 010A		3/16	GREY							5						
CE 011	2	1/4	BROWN	8	10.7	45.6	21	15.3	2.6	6.4	9.4	20.6	4	I=ECO50 DIE.UL107	1	19mm
CE 012		5/16	BROWN							8.4						
CE 013		3/8	BROWN							10.5						
CE 014	1	1/4	GREEN	9.1	11.9	46.6	21	17.1	2.7	6.4	9.4	20.6	5	I=ECO50 DIE.UL119	1	19mm
CE 015		5/16	GREEN							8.4						
CE 016		3/8	GREEN							10.5						
CE 017	1/0	1/4	PINK	9.9	13.2	46.6	21	18.9	3.2	6.4	9.4	20.6	5	I=ECO50 DIE.UL132	1	19mm
CE 018		5/16	PINK							8.4						
CE 019		3/8	PINK							10.5						
CE 019A		1/2	PINK							13						
CE 019AR		3/8	PINK							11						
CE 020	2/0	1/4	BLACK	11.2	14.3	57	24	20.7	3	6.4	12	27	6	I=ECO50 DIE.UL143	1	21mm
CE 021		5/16	BLACK							8.4						
CE 022		3/8	BLACK							10.5						
CE 023		1/2	BLACK							13						
CE 024	3/0	1/4	ORANGE	12.5	15.8	60	25	22.9	3.2	6.4	12	27	8	I=ECO50 DIE.UL158	1	21mm
CE 025		5/16	ORANGE							8.4						
CE 026		3/8	ORANGE							10.5						
CE 027		1/2	ORANGE							13						
CE 027R		1/2	ORANGE							13						
CE 027AR		3/8	ORANGE							10.5						
CE 028	4/0	1/4	PURPLE	13.9	17.5	60	25	25.4	3.4	6.4	12	27	8	I=ECO50 DIE.UL175	1	21mm
CE 029		5/16	PURPLE							8.4						
CE 030		3/8	PURPLE							10.5						
CE 031		1/2	PURPLE							13						
CE 032	250	3/8	YELLOW	15.1	19.1	63	27	27.7	3.8	10.5	12	27	9	I=ECO50 DIE.UL191	2	25mm
CE 033		1/2	YELLOW							13						
CE 034	300	1/2	WHITE	16.7	20.7	63	27	30.2	3.8	13	13.2	27	9	I=ECO50 DIE.UL207	2	25mm
CE 035		5/8	WHITE							17						
CE 036	350	1/2	RED	17.8	22.2	66	28	32.4	4.2	13	13.2	27	11	I=REC-5510 DIE.UL222	2	26mm
CE 037		5/8	RED							17						
CE 038	400	1/2	BLUE	19.4	24.1	78.2	30	35.2	4.5	13	13.2	35	13	I=REC-5510 DIE.UL241	2	28mm
CE 039		5/8	BLUE							17						
CE 040	500	1/2	BROWN	21.2	27	83.2	35	39.1	5.5	13	13.2	35	13	I=REC-5510 DIE.UL270	2	32mm
CE 041		5/8	BROWN							17						
CE 042	600	5/8	GREEN	23.5	30.2	89	38	43.6	6.4	17	17.5	37	14	I=REC-5510 DIE.UL302	3	35mm
CE 042A		1/2	GREEN							13						
CE 042AR		5/8	GREEN							17						
CE 042BR		1/2	GREEN							13						
CE 043	750	5/8	BLACK	26.2	33.3	111	47	48.3	6.8	17	17.5	47	17	I=REC-5510 DIE.UL333	3	44mm

Terminals can be provided with or without inspection vents.

**GROUP
CRYSTAL**

COPPER TWO HOLE SHORT BARREL SERIES COLOR CODED

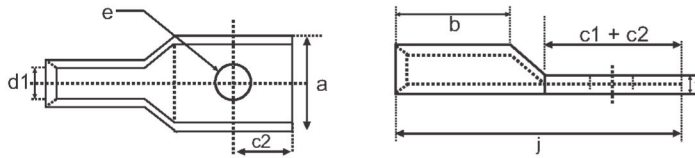


File No.: E328465

CAT NO.	Wire Range	Stud Size	Hole Spacing	Colour Code	d1	j	b	a	f	e	c2	c1 + c2	s	TOOL & DIE REFERENCE	NO. OF CRIMPS	STRIP LENGTH
CE 044	8	10	5/8	RED	4.4	46.2	11.2	10.7	2	5.3	7.1	32	15.90	M=MH14	2	10mm
CE 045	6	1/4	5/8	BLUE	5.2	53	18	10.7	2.1	6.4	7.1	32	15.90	M=MH14	2	16mm
CE 045A	6	1/4	1		5.2	67	18	10.7	2.1	6.4	7.1	46	25.40			
CE 045B	6	3/8	1	GREY	5.2	67	18	12.4	2.2	10.5	9.7	46	25.40	M=MH14	2	17mm
CE 046	4	1/4	5/8		6.4	53	18	12.4	2.2	6.4	7.1	32	15.90			
CE 046A	4	1/4	1		6.4	68	19	12.4	2.2	6.4	7.1	46	25.40			
CE 046B	4	3/8	1	BROWN	6.4	68	19	12.4	2.2	10.5	9.7	46	25.40	I=ECO50 DIE.UL107	1	19mm
CE 047	2	5/16	3/4		8	66.6	21	15.3	2.6	8.4	8.1	41	19.10			
CE 047A	2	1/4	5/8		8	58	21	15.3	2.6	6.4	7.1	32	15.90			
CE 047B	2	3/8	1		8	72	21	15.3	2.6	10.5	7.1	46	25.40			
CE 047C	2	1/4	3/4		8	60	21	15.3	2.6	6.4	7.1	35	19.10			
CE 047D	2	1/4	1	GREEN	8	71	21	15.3	2.6	6.4	7.1	46	25.40	I=ECO50 DIE.UL119	1	19mm
CE 048	1	1/4	5/8		9.1	58	21	17.1	2.7	6.4	7.1	32	15.90			
CE 049	1/0	5/16	7/8	PINK	9.9	67.1	21	18.9	3.2	8.4	8.1	41.1	22.20	I=ECO50 DIE.UL132	1	19mm
CE 050	1/0	3/8	1		9.9	72	21	18.9	3.2	10.5	9.7	46	25.40			
CE 051	2/0	3/8	1	BLACK	11.2	76	24	20.7	3	10.5	9.7	46	25.40	I=ECO50 DIE.UL143	1	22mm
CE 052	2/0	1/2	1 3/4		11.2	106	24	20.7	3	13	15.7	76	44.50			
CE 053	3/0	1/2	1 3/4	ORANGE	12.5	109	25	22.9	3.2	13	15.7	76	44.50	I=ECO50 DIE.UL158	2	23mm
CE 053A	3/0	3/8	1		12.5	79	25	22.9	3.2	10.5	9.7	46	25.40			
CE 054	4/0	1/2	1 3/4	PURPLE	13.9	109	25	25.4	3.4	13	15.7	76	44.50	I=ECO50 DIE.UL175	2	23mm
CE 055	4/0	3/8	1		13.9	79	25	25.4	3.4	10.5	9.7	46	25.40			
CE 056	250	1/2	1 3/4	YELLOW	15.1	112	27	27.7	3.8	13	15.7	76	44.50	I=REC-5510 DIE.UL190	2	25mm
CE 056A	250	3/8	1		15.1	82	27	27.7	3.8	10.5	9.7	46	25.40			
CE 057	300	1/2	1 3/4	WHITE	16.7	112	27	30.2	3.8	13	15.7	76	44.50	I=REC-5510 DIE.UL207	2	25mm
CE 058	350	1/2	1 3/4	RED	17.8	115	28	32.4	4.2	13	15.7	76	44.50	I=REC-5510 DIE.UL222	2	26mm
CE 058A	350	3/8	1		17.8	85	28	32.4	4.2	10.5	9.7	46	25.40			
CE 059	400	1/2	1 3/4	BLUE	19.4	119	30	35.2	4.5	13	15.7	76	44.50	I=REC-5510 DIE.UL241	2	28mm
CE 059R	400	1/2	1 3/4			122		35.7	4.7		13.5	73	44.50			
CE 060	500	1/2	1 3/4	BROWN	21.3	124	35	39.1	5.5	13	15.7	76	44.50	I=REC-5510 DIE.UL270	2	33mm
CE 060A	500	3/8	1		21.3	94	35	39.1	5.5	10.5	9.7	46	25.40			
CE 061	600	3/8	1 3/4	GREEN	23.5	126	38	43.6	6.4	13	15.7	76	44.50	I=REC5510 DIE.UL300	2	36mm
CE 062	600	1/2	1 3/4		23.5	128	38	43.6	6.4	13	15.7	76	44.50			36mm
CE 062R	600	1/2	1 3/4		23.5	129	35	43.7	6.75	13	13.5	73	44.50			33mm
CE 062AR	600	3/8	1 3/4		23.5	104	36	43.7	6.75	10.5	9.7	47	25.40			34mm
CE 062BR	650	1/2	1 3/4	PINK	24.75	129	35	45.2	6.75	13	13.5	73	44.50	I=REC-5510 DIE.UL315		34mm
CE 063	750	1/2	1 3/4	BLACK	26.5	140	47	48.3	6.8	13	15.7	76	44.50	I=REC-5510 DIE.UL333	2	45mm

Terminals can be provided with or without inspection vents.

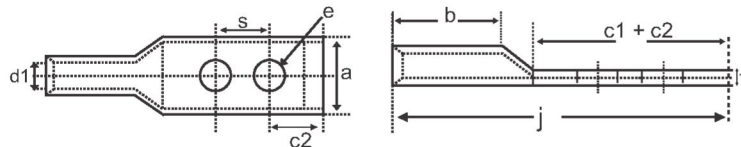
COPPER SINGLE HOLE LONG BARREL SERIES COLOR CODED



CAT NO.	Wire Range	Stud Size	Colour Code	d1	j	b	a	f	e	c2	c1 + c2	TOOL & DIE REFERENCE	NO. OF CRIMPS	STRIP LENGTH
CE 064	8	1/4	RED	4.4	38.5	20.5	10.7	2	6.4	7	15	M=MH14	2	18mm
CE 065	6	1/4	BLUE	5.2	45	25	10.7	2.1	6.4	7.5	17	M=MH14	2	22mm
CE 065A	6	3/8	BLUE		48.6	25	15	2.1	10.5	9.4	20.6			22mm
CE 065B	6	5/16	BLUE											
CE 065C	6	10	BLUE		45	25	10.7	2.1	5.3	7.5	17			22mm
CE 066	4	1/4	GREY	6.4	45	25	12.4	2.2	6.4	8	17	M=MH14	2	22mm
CE 066A	4	3/8	GREY		48.6	25	15	2.2	10.5	9.4	20.6			22mm
CE 066B	4	5/16	GREY		45	25	12.4	2.2	8.4	8	17			22mm
CE 066C	4	10	GREY		45	25	12.4	2.2	5.3	8	17			22mm
CE 067	2	5/16	BROWN	8	52.6	28	15.3	2.6	8.4	9.4	20.6	I=ECO50 DIE. UL107	2	26mm
CE 067A	2	3/8	BROWN	8	52.6	28	15.3	2.6	10.5	9.4	20.6			26mm
CE 067B	2	1/4	BROWN	8	52.6	28	15.3	2.6	6.4	9.4	20.6			26mm
CE 068	1	5/16	GREEN	9.1	53.6	28	17.1	2.7	8.4	9.4	20.6	I=ECO50 DIE. UL119	2	26mm
CE 068A	1	3/8	GREEN	9.1	53.6	28	17.1	2.7	10.5	9.4	20.6			26mm
CE 069	1/0	5/16	PINK	9.9	56.1	30.5	18.9	3.2	8.4	9.4	20.6	I=ECO50 DIE. UL132	2	28mm
CE 070	1/0	3/8	PINK						10.5					
CE 070A	1/0	1/2	PINK		63.5	30.5	18.9	3.2	13	12	27			28mm
CE 071	2/0	3/8	BLACK	11.2	68	35	20.7	3	10.5	12	27	I=ECO50 DIE. UL143	2	32mm
CE 071A	2/0	1/2	BLACK		68	35	20.7	3	13	12	27			32mm
CE 072	3/0	1/2	ORANGE	12.5	71	35	22.9	3.2	13	12	27	I=ECO50 DIE. UL158	2	32mm
CE 072A	3/0	3/8	ORANGE	12.5	71	35	22.9	3.2	10.5	12	27			32mm
CE 073	4/0	1/2	PURPLE	13.9	71	36	25.4	3.4	13	13.2	27	I=ECO50 DIE. UL175	2	32mm
CE 073A	4/0	3/8	PURPLE		71	36	25.4	3.4	10.5	13.2	27			32mm
CE 074	250	1/2	YELLOW	15.1	77	41	27.7	3.8	13	13.2	27	I=ECO50 DIE. UL191	2	38mm
CE 074A	250	3/8	YELLOW	15.1	77	41	27.7	3.8	10.5	13.2	27			38mm
CE 075	300	1/2	WHITE	16.7	86	50	30.2	3.8	13	13.2	27	I=REC-5510 DIE. UL207	3	47mm
CE 076	350	1/2	RED	17.8	88	50	32.4	4.2	13	13.2	27	I=REC-5510 DIE. UL222	3	47mm
CE 076A	350	5/8	RED		88	50	32.4	4.2	17	13	27			47mm
CE 077	400	1/2	BLUE	19.4	98	50	35.2	4.5	13	13	35	I=REC-5510 DIE. UL241	4	47mm
CE 078	400	5/8	BLUE						17					
CE 079	500	1/2	BROWN	21.2	105	57	39.1	5.5	13	13	35	I=REC-5510 DIE. UL270	4	55mm
CE 080	500	5/8	BROWN						17					
CE 081	600	5/8	GREEN	23.5	108	57	43.6	6.4	17	17.5	37	I=REC-5510 DIE. UL300	4	55mm
CE 082	750	5/8	BLACK	26.2	131	67	48.3	6.8	17	17.5	47	I=REC-5510 DIE. UL333	4	65mm

Terminals can be provided with or without inspection vents.

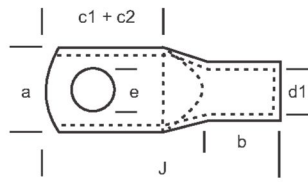
COPPER TWO HOLE LONG BARREL SERIES COLOR CODED



File No.: E328465

CAT NO.	WIRE RANGE	STUD SIZE	HOLE SPACING	COLOUR CODE	d1	j	b	a	f	e	c2	c1 + c2	s	TOOL & DIE REFERENCE	NO. OF CRIMPS	STRIP LENGTH
CE 083	8	10	5/8	RED	4.4	55.5	20.5	10.7	2	5.3	7.1	32	15.90	M=MH14	2	18mm
CE 084	8	1/4	5/8	RED	4.4	55.5	20.5	10.7	2	6.4	7.1	32	15.90			18mm
CE 085	6	1/4	5/8	BLUE	5.2	60	25	10.7	2.1	6.4	7.1	32	15.90	M=MH14	2	22mm
CE 085A	6	1/4	1/2	BLUE	5.2	57	25	10.7	2.1	6.4	7.1	29	12.70			22mm
CE 085B	6	1/2	1 3/4	BLUE	5.2	104	25	22.2	3	13	15.7	76	44.50			22mm
CE 085C	6	1/4	3/4	BLUE	5.2	63	25	10.7	2.1	6.4	7.1	35	19.10			22mm
CE 085D	6	3/8	1	BLUE	5.2	74	25	10.7	2.1	10.5	9.7	46	25.40			22mm
CE 086	4	1/4	5/8	GREY	6.4	60	25	12.4	2.2	6.4	7.1	32	15.90	M=MH14	2	22mm
CE 086A	4	3/8	1	GREY	6.4	75	25	10.7	2.2	10.5	9.7	46	25.40			22mm
CE 086B	4	1/4	3/4	GREY	6.4	64	25	12.4	2.2	6.4	7.1	35	19.10			22mm
CE 087	4	1/2	1 3/4	GREY	6.4	104	25	22	3	13	15.7	76	44.50			22mm
CE 088	2	5/16	3/4	BROWN	8	73	28	15.3	2.6	8.4	8.1	41	19.10	I=ECO50 DIE.UL107	2	26mm
CE 088A	2	3/8	1	BROWN	8	78	28	15.3	2.6	10.5	9.7	46	25.40			26mm
CE 088B	2	1/4	5/8	BROWN	8	64	28	15.3	2.6	6.4	7.1	32	15.90			26mm
CE 088C	2	1/4	3/4	BROWN	8	67	28	15.3	2.6	6.4	7.1	35	19.10			26mm
CE 089	2	5/16	7/8	BROWN	8	73	28	15.3	2.6	8.4	8.1	41	22.20			26mm
CE 090	2	1/2	1 3/4	BROWN	8	108	28	20.5	2.5	13	15.7	76	44.50			26mm
CE 091	1	1/4	5/8	GREEN	9.1	65	28	17.1	2.7	6.4	7.1	32	15.90	I=ECO50 DIE.UL119	2	26mm
CE 091A	1	3/8	1	GREEN	9.1	78	28	17.1	2.7	10.5	9.7	46	25.40			26mm
CE 091B	1	1/4	3/4	GREEN	9.1	68	28	17.1	2.7	6.4	7.1	35	19.10			26mm
CE 092	1	3/8	7/8	GREEN	9.1	74.5	28	17.1	2.7	8.4	8.1	41	22.20			26mm
CE 093	1	1/2	1 3/4	GREEN	9.1	109	28	19	2.5	13	15.7	76	44.50			26mm
CE 094	1/0	5/16	7/8	PINK	9.9	76.5	30.5	18.9	3.2	8.4	8.1	41	22.20	I=ECO50 DIE.UL132	2	28mm
CE 095	1/0	3/8	1	PINK	9.9	81.5	30.5	18.9	3.2	10.5	9.7	46	25.40			28mm
CE 096	1/0	1/2	1 3/4	PINK	9.9	117.7	30.5	18.9	3.1	13	15.7	76	44.50			28mm
CE 097	2/0	3/8	1	BLACK	11.2	87	35	20.7	3	10.5	9.7	46	25.40	I=ECO50 DIE.UL143	2	33mm
CE 097A	2/0	1/4	3/4	BLACK	11.2	76	35	20.7	3	6.4	7.1	35	19.10			33mm
CE 098	2/0	1/2	1 3/4	BLACK	11.2	117	35	20.7	3	13	15.7	76	44.50			33mm
CE 099	3/0	5/16	1	ORANGE	12.5	89	35	22.9	3.2	8.4	8.1	46	25.40	I=ECO50 DIE.UL158	2	33mm
CE 099A	3/0	3/8	1	ORANGE	12.5	89	35	22.9	3.2	10.5	9.7	46	25.40			33mm
CE 100	3/0	3/8	1 3/4	ORANGE	12.5	118	35	22.9	3.2	10.5	9.7	76	44.50			33mm
CE 100A	3/0	1/2	1 3/4	ORANGE	12.5	118	35	22.9	3.2	13	15.7	76	44.50			33mm
CE 101	4/0	3/8	1	PURPLE	13.9	90	36	25.4	3.4	10.5	9.7	46	25.40	I=ECO50 DIE.UL175	2	34mm
CE 102	4/0	1/2	1 3/4	PURPLE	13.9	120	36	25.4	3.4	13	15.7	76	44.50			34mm
CE 103	250	3/8	1	YELLOW	15.1	96	41	27.7	3.8	10.5	9.7	46	25.40	I=ECO50 DIE.UL191	3	39mm
CE 104	250	1/2	1 3/4	YELLOW	15.1	126	41	27.7	3.8	13	15.7	76	44.50			39mm
CE 105	300	1/2	1 3/4	WHITE	16.7	135	50	30.2	3.8	13	15.7	76	44.50	I=REC-5510 DIE.UL207	3	48mm
CE 106	350	1/2	1 3/4	RED	17.8	137	50	32.4	4.2	13	15.7	76	44.50	I=REC-5510 DIE.UL222	3	48mm
CE 106A	350	3/8	1	RED	17.8	107	50	32.4	4.2	10.5	9.7	46	25.40			48mm
CE 107	400	1/2	1 3/4	BLUE	19.4	139	50	35.2	4.5	13	15.7	76	44.50	I=REC-5510 DIE.UL241	3	48mm
CE 108	500	1/2	1 3/4	BROWN	21.3	146	57	39.1	5.5	13	15.7	76	44.50	I=REC-5510 DIE.UL270	3	55mm
CE 108A	500	3/8	1	BROWN	21.3	116	57	39.1	5.5	10.5	9.7	46	25.40			55mm
CE 109	600	1/2	1 3/4	GREEN	23.5	147	57	43.6	6.4	13	15.7	76	44.50	I=REC-5510 DIE.UL302	3	55mm
CE 109A	600	3/8	1	GREEN	23.5	117	57	43.6	6.4	10.5	9.7	46	25.40			55mm
CE 110	750	1/2	1 3/4	BLACK	26.5	160	67	48.3	6.8	13	15.7	76	44.50	I=REC-5510 DIE.UL333	3	65mm
CE 110A	750	3/8	1	BLACK	26.5	130	67	48.3	6.8	10.5	9.7	46	25.40			65mm

COPPER SINGLE HOLE TERMINAL HEAVY DUTY SERIES

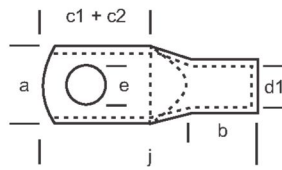


File No.: E328465

PART NO COPPER FINISH	PART NO TIN PLATED	CABLE	STUD	d1	j	a	c1+c2	b	e	TOOL & DIE REFERENCE	NO. OF CRIMPS	STRIP LENGTH
CE 301	CE 301T	8	1/4"	4.72	32.00	11.58	17.15	13.97	6.40	M=MH-14	2	10mm
CE 301A	CE 301AT	8	10	4.72	32.00	11.58	17.15	13.97	5.31			10mm
CE 302	CE 302T	8	5/16"	4.72	32.00	11.58	17.15	13.97	8.41			10mm
CE 303	CE 303T	8	3/8"	4.72	35.18	14.48	17.15	13.97	10.49			10mm
CE 304	CE 304	8	1/2"	4.72	42.55	16.50	20.62	13.97	13.00			10mm
CE 305	CE 305T	6	1/4"	5.89	32.64	13.72	17.78	13.97	6.40	M=MH-14	1	10mm
CE 305A	CE 305AT	6	10	5.89	32.64	13.72	17.78	13.97	5.31			10mm
CE 306	CE 306T	6	5/16"	5.89	32.64	13.72	17.78	13.97	8.41			10mm
CE 307	CE 307T	6	3/8"	5.89	32.64	13.72	17.78	13.97	10.49			10mm
CE 308	CE 308T	6	1/2"	5.89	42.55	16.50	20.62	13.97	13.00			10mm
CE 309	CE 309T	4	1/4"	7.14	40.64	13.72	20.32	14.73	6.40	I=ECO50 DIE.UL904	1	12mm
CE 309A	CE 309AT	4	10	7.14	40.64	13.72	20.32	14.73	5.31			12mm
CE 310	CE 310T	4	5/16"	7.14	40.64	13.72	20.32	14.73	8.41			12mm
CE 311	CE 311T	4	3/8"	7.14	40.64	14.48	20.32	14.73	10.49			12mm
CE 312	CE 312T	4	1/2"	7.14	40.64	16.50	20.32	14.73	13.00			12mm
CE 313	CE 313T	2	1/4"	8.43	45.40	16.51	19.61	17.50	6.40	I=ECO50 DIE.UL106	1	15mm
CE 314	CE 314T	2	5/16"	8.43	45.40	16.51	19.61	17.50	8.41			15mm
CE 315	CE 315T	2	3/8"	8.43	45.40	16.51	19.61	17.50	10.49			15mm
CE 316	CE 316T	2	1/2"	8.43	45.40	16.51	19.61	17.50	13.00			15mm
CE 317	CE 317T	1	1/4"	8.94	46.00	16.70	17.53	18.00	6.40	I=ECO50 DIE.UL111	1	16mm
CE 318	CE 318T	1	5/16"	8.94	46.00	16.70	17.53	18.00	8.41			16mm
CE 319	CE 319T	1	3/8"	8.94	46.00	16.70	17.53	18.00	10.49			16mm
CE 320	CE 320T	1	1/2"	8.94	46.00	16.70	17.53	18.00	13.00			16mm
CE 321	CE 321T	1/0	1/4"	10.19	49.50	18.50	21.34	19.30	6.40	I=ECO50 DIE.UL126	1	18mm
CE 322	CE 322T	1/0	5/16"	10.19	49.50	18.50	21.34	19.30	8.41			18mm
CE 323	CE 323T	1/0	3/8"	10.19	49.50	18.50	21.34	19.30	10.49			18mm
CE 324	CE 324T	1/0	1/2"	10.19	49.50	18.50	21.34	19.30	13.00			18mm
CE 325	CE 325T	2/0	1/4"	11.58	57.00	20.83	24.38	21.00	6.40	I=ECO50 DIE.UL142	1	19mm
CE 326	CE 326T	2/0	5/16"	11.58	57.00	20.83	24.38	21.00	8.41			19mm
CE 327	CE 327T	2/0	3/8"	11.58	57.00	20.83	24.38	21.00	10.49			19mm
CE 328	CE 328T	2/0	1/2"	11.58	57.00	20.83	24.38	21.00	13.00			19mm
CE 329	CE 329T	3/0	1/4"	12.93	59.00	22.96	25.04	21.46	6.40	I=ECO50 DIE.UL156	1	19mm
CE 330	CE 330T	3/0	1/2"	12.93	59.00	22.96	25.04	21.46	13.00			19mm
CE 331	CE 331T	4/0	3/8"	14.94	66.29	26.31	28.40	23.11	10.49	I=ECO50 DIE.UL176	2	21mm
CE 332	CE 332T	4/0	1/2"	14.94	66.29	26.31	28.40	23.11	13.00			21mm

Terminals can be provided with or without inspection vents.

COPPER SINGLE HOLE HEAVY DUTY SERIES

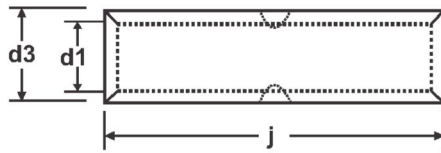


File No.: E328465

CAT NO:	WIRE	STUD	d1	j	a	c1 + c2	b	e	MARKING INFO	TOOL & DIE REFERENCE	NO. OF CRIMPS	STRIP LENGTH
CE 801HD	8	1/4	4.70	28.50	11.99	14.00	10.01	6.40	8 MH14-RED	M=MH-14	1	8mm
CE 802HD	8	5/16	4.70	35.00	15.01	20.00	10.01	8.40	8 MH14-RED			8mm
CE 803HD	8	3/8	4.70	38.99	16.99	24.00	10.01	10.50	8 MH14-RED			8mm
CE 804HD	8	1/2	4.70	42.01	19.00	26.01	10.01	13.00	8 MH14-RED			8mm
CE 811HD	6	1/4	5.41	33.25	11.99	13.74	13.00	6.40	6 UL851-BU			11mm
CE 812HD	6	5/16	5.41	37.49	15.01	18.03	13.00	8.40	6 UL851-BU	I=ECO50 DIE.UL851	1	11mm
CE 813HD	6	3/8	5.41	41.50	16.99	22.00	13.00	10.50	6 UL851-BU			11mm
CE 814HD	6	1/2	5.41	44.98	19.00	24.99	13.00	13.00	6 UL851-BU			11mm
CE 821HD	4	1/4	6.96	37.49	14.00	15.01	15.01	6.40	4 UL100-GREY		1	14mm
CE 822HD	4	5/16	6.96	42.01	18.00	20.00	15.01	8.40	4 UL100-GREY	I=ECO50 DIE.UL100		14mm
CE 823HD	4	3/8	6.96	46.00	18.00	23.98	15.01	10.50	4 UL100-GREY			14mm
CE 824HD	4	1/2	6.96	48.01	19.00	26.01	15.01	13.00	4 UL100-GREY			14mm
CE 831HD	1-2	1/4	9.88	47.02	20.00	20.00	20.00	6.40	1UL140-PINK			18mm
CE 832HD	1-2	5/16	9.88	47.02	20.00	20.00	20.00	8.40	1UL140-PINK	I=ECO50 DIE UL140	1	18mm
CE 833HD	1-2	3/8	9.88	51.00	19.99	24.00	20.00	10.50	1UL140-PINK			18mm
CE 834HD	1-2	1/2	9.88	56.01	23.01	26.01	20.00	13.00	1UL140-PINK			18mm
CE 851HD	1/0	1/4	11.38	50.01	22.00	20.00	20.00	6.40	1/0 UL155-BLK	I=ECO50 DIE UL155		18mm
CE 852HD	1/0	5/16	11.38	50.01	22.00	20.00	20.00	8.40	1/0 UL155-BLK		1	18mm
CE 853HD	1/0	3/8	11.38	54.00	22.00	24.00	20.00	10.50	1/0 UL155-BLK			18mm
CE 854HD	1/0	1/2	11.38	58.01	23.01	26.01	20.00	13.00	1/0 UL155-BLK			18mm
CE 862HD	2/0	5/16	11.94	52.40	23.01	20.00	21.01	8.40	2/0 UL165-ORG			20mm
CE 863HD	2/0	3/8	11.94	55.01	23.01	24.00	21.01	10.50	2/0 UL165-ORG	I=ECO50 DIE UL165	1	20mm
CE 864HD	2/0	1/2	11.94	59.00	23.01	26.01	21.01	13.00	2/0 UL165-ORG			20mm
CE 873HD	3/0	3/8	13.39	59.99	26.01	24.00	24.99	10.50	3/0 UL180-PUR			23mm
CE 874HD	3/0	1/2	13.39	62.00	26.01	26.01	24.99	13.00	3/0 UL180-PUR	I=ECO50 DIE UL180	2	23mm
CE 883HD	4/0	3/8	15.06	65.00	27.99	27.99	26.01	10.50	4/0 UL195-YEL			24mm
CE 884HD	4/0	1/2	15.06	65.00	27.99	27.99	26.01	13.00	4/0 UL195-YEL	I=ECO50 DIE UL195	2	24mm

Terminals can be provided with or without inspection vents.

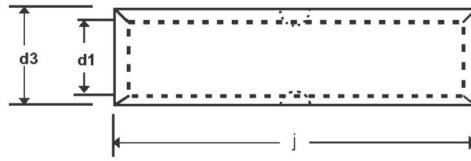
COPPER BUTT SPLICES (SHORT & LONG) COLOR CODED



CAT. NO.	WIRE RANGE	COLOUR CODE	d1	d3	j	TOOL RECOMMENDED DIE REFERENCE	NUMBER OF CRIMPS	STRIP LENGTH
CE 111	8	RED	4.4	6.9	22.9	M=MH14	2	10mm
CE 112	6	BLUE	5.2	7.5	25.4	M=MH14	2	12mm
CE 113	4	GREY	6.4	8.7	25.4	M=MH14	2	12mm
CE 114	2	BROWN	8	10.7	31.8	I=ECO50 DIE.UL 107	3	15mm
CE 115	1	GREEN	9.1	11.9	45.7	I=ECO50 DIE.UL 119	3	21mm
CE 116	1/0	PINK	9.9	13.2	40.6	I=ECO50 DIE.UL 132	3	18mm
CE 117	2/0	BLACK	11.2	14.3	44.5	I=ECO50 DIE.UL 143	3	20mm
CE 118	3/0	ORANGE	12.5	15.8	44.5	I=ECO50 DIE.UL 158	3	20mm
CE 119	4/0	PURPLE	13.9	17.5	48.3	I=ECO50 DIE.UL 175	3	23mm
CE 120	250	YELLOW	15.1	19.1	50.8	I=ECO50 DIE.UL 191	3	24mm
CE 121	300	WHITE	16.7	20.7	53.3	I=ECO50 DIE.UL 207	3	25mm
CE 122	350	RED	17.8	22.2	53.3	I=ECO50 DIE.UL 222	3	25mm
CE 123	400	BLUE	19.4	24.1	58.4	I=ECO50 DIE.UL 241	3	27mm
CE 124	500	BROWN	21.2	27	63.5	I=ECO50 DIE.UL 270	4	30mm
CE 125	600	GREEN	23.5	30.2	63.5	I=ECO50 DIE.UL 302	4	30mm
CE 126	750	BLACK	26.2	33.3	81.3	I=ECO50 DIE.UL 333	4	40mm
CE 127	8	RED	4.4	6.9	44.5	M=MH14	2	20mm
CE 128	6	BLUE	5.2	7.5	44.5	M=MH14	2	20mm
CE 129	4	GREY	6.4	8.7	44.5	M=MH14	2	20mm
CE 130	2	BROWN	8	10.7	48.3	I=ECO50 DIE.UL 107	3	22mm
CE 131	1	GREEN	9.1	11.9	55.9	I=ECO50 DIE.UL 119	3	26mm
CE 132	1/0	PINK	9.9	13.2	55.9	I=ECO50 DIE.UL 132	3	26mm
CE 133	2/0	BLACK	11.2	14.3	57.2	I=ECO50 DIE.UL 143	3	28mm
CE 134	3/0	ORANGE	12.5	15.8	57.2	I=ECO50 DIE.UL 158	3	28mm
CE 135	4/0	PURPLE	13.9	17.5	69.9	I=ECO50 DIE.UL 175	3	33mm
CE 136	250	YELLOW	15.1	19.1	82.6	I=ECO50 DIE.UL 191	3	40mm
CE 137	300	WHITE	16.7	20.7	89	I=ECO50 DIE.UL 207	3	43mm
CE 138	350	RED	17.8	22.2	95.3	I=ECO50 DIE.UL 222	3	46mm
CE 139	400	BLUE	19.4	24.1	95.3	I=ECO50 DIE.UL 241	3	46mm
CE 140	500	BROWN	21.2	27	108	I=ECO50 DIE.UL 270	4	52mm
CE 141	600	GREEN	23.5	30.2	114.3	I=ECO50 DIE.UL 302	4	55mm
CE 142	750	BLACK	26.2	33.3	120.7	I=ECO50 DIE.UL 333	4	57mm

Connectors can be provided with dimple, v-knotch or straight inspection vents.

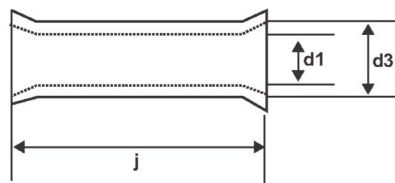
COPPER BUTT SPLICE CONNECTOR COLOR CODED



PART NO.	CABLE SIZE	d1	d3	j	MARKING INFORMATION	TOOL RECOMMENDED DIE REFERENCE	NO. OF CRIMPS	STRIP LENGTH
CE 900	8	4.70	7.01	30.00	8 MH14 -RED	M=MH14	3	13mm
CE 910	6	5.41	8.51	35.00	6 MH14-BLU	M=MH14	3	15mm
CE 920	4	6.96	10.00	40.00	4 UL 100-GREY	I=ECO50 DIE.UL100	4	18mm
CE 940	1	9.88	14.00	50.00	1-UL 140-PINK	I=ECO50 DIE.UL140	4	24mm
CE 950	1/0	11.36	15.50	50.00	2/0 UL155-BLK	I=ECO50 DIE.UL155	4	24mm
CE 960	2/0	11.95	16.61	55.00	2/0 UL166-ORG	I=ECO50 DIE.UL166	4	26mm
CE 970	3/0	13.39	18.00	60.00	3/0 UL180-PUR	I=ECO50 DIE.UL180	4	28mm
CE 980	4/0	15.06	19.51	65.00	4/0 UL194-YEL	I=ECO50 DIE.UL195	4	32mm

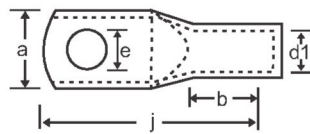
Connectors can be provided with dimple, v-knotch or straight inspection vents.

COPPER IN LINE CONNECTOR-FLARED MOUTH SERIES



PART NO COPPER FINISH	PART NO TIN FINISH	WIRE RANGE	DIMENSIONS IN INCHES			TOOL RECOMMENDED DIE REFERENCE	NO. OF CRIMPS	STRIP LENGTH
			d1	d3	j			
CE 333	CE 333 T	8	4.7244	6.350	27.940	M=MH14	4	12mm
CE 334	CE 334 T	6	5.5928	7.925	29.210	M=MH14	4	14mm
CE 335	CE 335 T	4	7.1374	9.042	30.988	M=MH14	4	14mm
CE 336	CE 336 T	2	8.4328	10.668	34.036	IZ=ECO50 DIE.UL106	2	16mm
CE 337	CE 337 T	1	8.9408	11.176	34.036	IZ=ECO50 DIE.UL111	2	16mm
CE 338	CE 338 T	1/0	10.1854	12.649	39.624	IZ=ECO50 DIE.UL126	2	18mm
CE 339	CE 339 T	2/0	11.5824	14.224	45.974	IZ=ECO50 DIE.UL142	2	20mm
CE 340	CE 340 T	3/0	12.9286	15.621	48.260	IZ=ECO50 DIE.UL156	2	22mm
CE 341	CE 341 T	4/0	14.9352	17.628	62.484	IZ=ECO50 DIE.UL176	2	26mm

COPPER SINGLE HOLE STANDARD BARREL SERIES



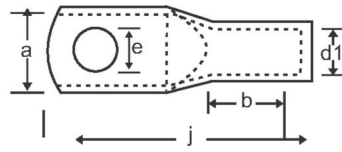
File No.: E328465

CAT NO.	CABLE SIZE	e	b	a	d1	j	TOOL RECOMMENDED DIE REFERENCE	NUMBER OF CRIMPS	STRIP LENGTH
CEDL 6 - 5	8	M 5	10	8.5	3.8	30.5	M=MH14	1	8mm
CEDL 6 - 6	8	M 6	10	8.5	3.8	31.5			
CEDL 6 - 8	8	M 8	10	13.0	3.8	34.0			
CEDL 10 - 5	6	M 5	10	9.0	4.5	34.0	M=MH14	1	8mm
CEDL 10 - 6	6	M 6	10	9.0	4.5	34.5			
CEDL 10 - 8	6	M 8	10	13.0	4.5	37.0			
CEDL 16 - 6	6	M 6	20	13.0	5.5	43.5	M=MH14	1	18mm
CEDL 16 - 8	6	M 8	20	13.0	5.5	46.0			
CEDL 16-10	6	M10	20	17.0	5.5	48.0			
CEDL 16-12	6	M12	20	18.0	5.5	49.0			
CEDL 25 - 6	4	M 6	20	14.0	7.0	45.5	I=ECO50 DIE.UL100	1	18mm
CEDL 25 - 8	4	M 8	20	16.0	7.0	48.0			
CEDL 25-10	4	M10	20	17.0	7.0	50.0			
CEDL 25-12	4	M12	20	19.0	7.0	51.0			
CEDL 35 - 6	2	M 6	20	17.0	8.2	49.5	I=ECO50 DIE.UL125	1	18mm
CEDL 35 - 8	2	M 8	20	17.0	8.2	52.0			
CEDL 35-10	2	M10	20	19.0	8.2	54.0			
CEDL 35-12	2	M12	20	21.0	8.2	55.0			
CEDL 35-14	2	M14	20	21.0	8.2	56.5			
CEDL 50 - 8	1	M 8	28	20.0	10.0	62.0	I=ECO50 DIE.UL145	2	26mm
CEDL 50-10	1	M10	28	22.0	10.0	64.0			
CEDL 50-12	1	M12	28	24.0	10.0	65.0			
CEDL 50-14	1	M14	28	24.0	10.0	66.5			
CEDL 50-16	1	M16	28	28.0	10.0	68.0			
CEDL 70 - 8	2/0	M 8	28	24.0	11.5	65.0			
CEDL 70-10	2/0	M10	28	24.0	11.5	67.0			
CEDL 70-12	2/0	M12	28	24.0	11.5	68.0			
CEDL 70-14	2/0	M14	28	24.0	11.5	69.5			
CEDL 70-16	2/0	M16	28	30.0	11.5	71.0			
CEDL 95 - 8	3/0	M 8	35	28.0	13.5	77.0	I=ECO50 DIE.UL190	2	33mm
CEDL 95-10	3/0	M10	35	28.0	13.5	77.0			
CEDL 95-12	3/0	M12	35	28.0	13.5	78.0			
CEDL 95-14	3/0	M14	35	28.0	13.5	79.5			
CEDL 95-16	3/0	M16	35	32.0	13.5	81.0			
CEDL 120 - 10	250 MCM	M10	35	32.0	15.5	85.0			
CEDL 120 - 12	250 MCM	M12	35	32.0	15.5	86.0			
CEDL 120 - 14	250 MCM	M14	35	32.0	15.5	88.0			
CEDL 120 - 16	250 MCM	M16	35	34.0	15.5	89.0			
CEDL 120 - 20	250 MCM	M20	35	38.0	15.5	91.0			
CEDL 150 - 10	300 MCM	M10	35	34.0	17.0	93.0	I=REC-5510 DIE.UL235	2	33mm
CEDL 150 - 12	300 MCM	M12	35	34.0	17.0	94.0			
CEDL 150 - 14	300 MCM	M14	35	34.0	17.0	97.0			
CEDL 150 - 16	300 MCM	M16	35	34.0	17.0	97.0			
CEDL 150 - 20	300 MCM	M20	35	40.0	17.0	99.0			
CEDL 185 - 10	400 MCM	M10	40	37.0	19.0	97.0			
CEDL 185 - 12	400 MCM	M12	40	37.0	19.0	98.0			
CEDL 185 - 14	400 MCM	M14	40	37.0	19.0	101.0			
CEDL 185 - 16	400 MCM	M16	40	37.0	19.0	101.0			
CEDL 185 - 20	400 MCM	M20	40	40.0	19.0	103.0			
CEDL 240 - 12	500 MCM	M12	40	42.0	21.5	108.0	I=REC-5510 DIE.UL290	2	38mm
CEDL 240 - 14	500 MCM	M14	40	42.0	21.5	111.0			
CEDL 240 - 16	500 MCM	M16	40	42.0	21.5	111.0			
CEDL 240 - 20	500 MCM	M20	40	45.0	21.5	113.0			
CEDL 300 - 14	600 MCM	M14	50	48.0	24.5	119.0			
CEDL 300 - 16	600 MCM	M16	50	48.0	24.5	119.0			
CEDL 300 - 20	600 MCM	M20	50	48.0	24.5	122.0			
CEDL 400 - 14	750 MCM	M14	70	55.0	27.5	140.0	C=CRIMP-FT-1000 DIE H385	3	68mm
CEDL 400 - 16	750 MCM	M16	70	55.0	27.5	140.0			
CEDL 400 - 20	750 MCM	M20	70	55.0	27.5	140.0			

Terminals can be provided with or without inspection vents.
Dimensions as per DIN-46235



COPPER SINGLE HOLE LONG BARREL SERIES



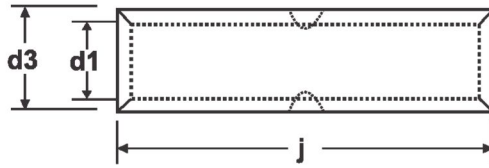
File No.: E328465

CAT NO	Cable AWG/MCM	e	b	a	d1	j	TOOL RECOMMENDED DIE REFERENCE	NO. OF CRIMPS	STRIP LENGTH
CELB 1.5 - 5	16	M 5	7	8.0	1.8	18	M=MH14	1	5mm
CELB 1.5 - 6	16	M 6	7	10.0	1.8	20			5mm
CELB 2.5 - 4	14	M 4	7	8.00	2.4	18	M=MH14	1	5mm
CELB 2.5 - 5	14	M 5	7	9.50	1.8	20			5mm
CELB 2.5 - 6	14	M 6	7	10.00	1.8	20			5mm
CELB 2.5 - 8	14	M 8	7	11.00	2.4	24			5mm
CELB 4 - 5	8	M 5	9	9.50	3.1	22	M=MH14	1	8mm
CELB 4 - 6	8	M 6	9	10.00	3.1	22			8mm
CELB 4 - 8	8	M 8	9	11.50	3.1	26			8mm
CELB 6 - 5	6	M 5	9	9.50	3.8	23	M=MH14	1	8mm
CELB 6 - 6	6	M 6	9	11.00	3.8	27			8mm
CELB 6 - 8	6	M 8	9	11.50	3.8	27			8mm
CELB 6 - 10	6	M 10	9	15.00	3.8	32			8mm
CELB 10 - 5	6	M 5	10	11.00	4.7	27	M=MH14	1	9mm
CELB 10 - 6	6	M 6	10	11.50	4.7	27			9mm
CELB 10 - 8	6	M 8	10	13.50	4.7	29			9mm
CELB 10 - 10	6	M 10	10	15.00	4.7	32			9mm
CELB 10 - 12	6	M 12	10	17.00	4.7	37			9mm
CELB 16 - 6	4	M 6	19	11.00	5.5	37	M=MH14	2	17mm
CELB 16 - 8	4	M 8	19	13.50	5.5	39			17mm
CELB 16 - 10	4	M 10	19	15.00	5.5	41	M=MH14	2	17mm
CELB 16 - 12	4	M 12	19	17.00	5.5	46			17mm
CELB 25 - 6	3	M 6	21	13.00	7.1	41	I=ECO50 DIE.UL095	1	19mm
CELB 25 - 8	3	M 8	21	13.50	7.1	41			19mm
CELB 25 - 10	3	M 10	21	15.50	7.1	44			19mm
CELB 25 - 12	3	M 12	21	17.00	7.1	48			19mm
CELB 35 - 6	2	M 6	21	15.50	8.2	44	I=ECO50 DIE.UL112	1	19mm
CELB 35 - 8	2	M 8	21	16.50	8.2	44			19mm
CELB 35 - 10	2	M 10	21	17.00	8.2	46			19mm
CELB 35 - 12	2	M 12	21	18.50	8.2	50			19mm
CELB 50 - 6	2	M 6	22	18.00	9.5	48	I=ECO50 DIE.UL128	1	20mm
CELB 50 - 8	2	M 8	22	18.00	9.5	48			20mm
CELB 50 - 10	2	M 10	22	18.00	9.5	48			20mm
CELB 50 - 12	2	M 12	22	20.00	9.5	52			20mm
CELB 70 - 6	2/0	M 6	24	21.00	11.2	54	I=ECO50 DIE.UL147	1	22mm
CELB 70 - 8	2/0	M 8	24	21.00	11.2	54			22mm
CELB 70 - 10	2/0	M 10	24	21.00	11.2	54			22mm
CELB 70 - 12	2/0	M 12	24	21.00	11.2	54			22mm
CELB 70 - 16	2/0	M 16	24	27.00	11.2	64			22mm
CELB 95 - 6	3/0	M 6	27	25.00	13.4	60	I=ECO50 DIE.UL174	1	25mm
CELB 95 - 8	3/0	M 8	27	25.00	13.4	60			25mm
CELB 95 - 10	3/0	M 10	27	25.00	13.4	60			25mm
CELB 95 - 12	3/0	M 12	27	25.00	13.4	60			25mm
CELB 95 - 16	3/0	M 16	27	28.00	13.4	64			25mm
CELB 120 - 6	250 MCM	M 6	30	29.00	15.6	64	I=ECO50 DIE.UL206	1	28mm
CELB 120 - 8	250 MCM	M 8	30	29.00	15.6	64			28mm
CELB 120 - 10	250 MCM	M 10	30	29.00	15.6	64			28mm
CELB 120 - 12	250 MCM	M 12	30	29.00	15.6	64			28mm
CELB 120 - 16	250 MCM	M 16	30	29.00	15.6	68			28mm
CELB 120 - 20	250 MCM	M 20	30	31.00	15.6	81	I=REC-5510 DIE.UL225	2	28mm
CELB 150 - 10	350 MCM	M 10	30	32.00	16.7	71			28mm
CELB 150 - 12	350 MCM	M 12	30	32.00	16.7	80			28mm
CELB 150 - 16	350 MCM	M 16	30	32.00	16.7	80			28mm
CELB 150 - 20	350 MCM	M 20	30	32.00	16.7	80	I=REC-5510 DIE.UL242	2	28mm
CELB 185 - 10	400 MCM	M 10	32	35.00	18.4	74			30mm
CELB 185 - 12	400 MCM	M 12	32	35.00	18.4	83			30mm
CELB 185 - 16	400MCM	M 16	32	35.00	18.4	83			30mm
CELB 185 - 20	400MCM	M 20	32	38.00	18.4	84	I=REC-5510 DIE.UL282	3	30mm
CELB 240	600 MCM	BLK	38	40.00	21.2	92			36mm
CELB 240 - 12	600 MCM	M 12	38	40.00	21.2	92	I=REC-5510 DIE.UL313	3	36mm
CELB 300	750 MCM	BLK	42	45.00	23.5	101			40mm
CELB 300 - 12	750 MCM	M 12	42	45.00	23.5	101	C=CRIMP-FT-1000-H348	3	40mm
CELB 400	750 MCM	BLK	44	50.00	26.8	114			42mm

Terminals can be provided with or without inspection vents.



COPPER SHORT AND STANDARD BUTT SPLICES



CAT. NO.	CABLE AWG/MCM	d1	d3	j	TOOL RECOMMENDED DIE REFERENCE	NO. OF CRIMPS	STRIP LENGTH
CELC 1.5 - 22	16	1.8	3.7	22	M=MH14	4	8mm
CELC 2.5 - 22	14	2.4	4.0	22	M=MH14	4	8mm
CELC 4 - 22	12	3.1	4.8	22	M=MH14	4	8mm
CELC 6 - 22	10	3.8	5.5	22	M=MH14	4	8mm
CELC 10 - 22	6	4.7	7.1	22	M=MH14	4	8mm
CEDB 16 - 50	6	5.5	8.5	50	M=MH14	4	20mm
CELC 16 - 44	6	5.5	7.9	44	M=MH14	4	18mm
CEDB 25 - 50	4	7.0	10.0	50	I=ECO50 DIE.UL100	4	20mm
CELC 25 - 48	4	7.1	9.5	48	I=ECO50 DIE.UL950	4	18mm
CEDB 35 - 50	2	8.2	12.5	50	I=ECO50 DIE.UL125	4	20mm
CELC 35 - 48	2	8.2	11.2	48	I=ECO50 DIE.UL112	4	18mm
CEDB 50 - 56	1/0	10.0	14.5	56	I=ECO50 DIE.UL145	4	22mm
CELC 50 - 48	1/0	9.5	12.8	48	I=ECO50 DIE.UL128	4	18mm
CEDB 70 - 56	2/0	11.5	16.5	56	I=ECO50 DIE.UL165	4	22mm
CELC 70 - 52	2/0	11.2	14.7	52	I=ECO50 DIE.UL147	4	20mm
CEDB 95 - 70	3/0	13.5	19.0	70	I=ECO50 DIE.UL190	4	30mm
CELC 95 - 54	3/0	13.4	17.4	54	I=ECO50 DIE.UL174	4	22mm
CEDB 120 - 70	4/0	15.5	21.0	70	I=REC-5510 DIE.UL210	4	30mm
CELC 120 - 66	4/0	15.6	20.6	66	I=REC-5510 DIE.UL206	4	28mm
CEDB 150 - 80	300 MCM	17.0	23.5	80	I=REC-5510 DIE.UL235	4	35mm
CELC 150 - 66	300 MCM	16.7	22.5	66	I=REC-5510 DIE.UL225	4	28mm
CEDB 185 - 85	350 MCM	19.0	25.5	85	I=REC-5510 DIE.UL255	4	37mm
CELC 185 - 66	350 MCM	18.4	24.2	66	I=REC-5510 DIE.UL242	4	28mm
CEDB 240 - 90	500 MCM	21.5	29.0	90	I=REC-5510 DIE.UL290	4	42mm
CELC 240 - 91	500 MCM	21.2	28.2	91	I=REC-5510 DIE.UL282	4	42mm
CEDB 300 - 100	600 MCM	24.5	32.0	100	I=REC-5510 DIE.UL320	4	45mm
CELC 300 - 91	600 MCM	23.5	31.3	91	I=REC-5510 DIE.UL313	4	42mm
CEDB 400 - 150	750 MCM	27.5	38.5	150	C=CRIMP-FT-1000-DIE-H385	4	70mm
CELC 400 - 91	750 MCM	26.8	34.8	91	C=CRIMP-FT-1000-DIE-H348	4	42mm

Connectors can be provided with dimple, v-knotch or straight inspection vents.

INSTALLATION PROCEDURES FOR COPPER CABLE TERMINALS AND CONNECTORS



File No.: E328465

- 1) PRIOR TO JOINT PREPARATION ENSURE ALL CABLES ARE DISCONNECTED FROM LIVE SUPPLY.
- 2) VERIFY THE CONNECTOR SIZE FOR THE CONDUCTOR SIZE TO BE USED.
- 3) REMOVE THE INSULATION FROM THE CONDUCTOR. ENSURE THAT CONDUCTOR STRANDS ARE NOT DISTURBED WHILE STRIPPING. STRIPPING LENGTH IS TO BE IN LINE WITH THE BARREL LENGTH AND EXPOSURE OF THE BARE CONDUCTOR STRANDS TO BE AVOIDED.
- 4) SELECT THE PROPER CRIMPING DIE AS RECOMMENDED ALONG WITH THE APPROPRIATE CRIMPING TOOL. FOR SMALLER CONNECTORS UPTO AWG #4 HAND CRIMPING TOOL CAN BE USED. FOR CONNECTOR SIZES BEYOND THIS AND UPTO 300MCM (150MM²) A 6 TON CLASS HYDRAULIC TOOL IS RECOMMENDED. FOR CONNECTORS BEYOND 300MCM (150MM²) UPTO 750MCM (400MM²) A 12 TON CLASS HYDRAULIC TOOLS IS RECOMMENDED. THIS ENSURES A PERFECT JOINT.
- 5) THE CONNECTOR TO BE PLACED AT THE CENTRE OF THE CRIMPING DIE. CRIMPING TO START FROM THE PALM END TOWARDS THE CONDUCTOR ENTRY AREA. NUMBER OF CRIMPS RECOMMENDED MAY BE FOLLOWED.
- 6) CRIMPED JOINTS TO BE VERIFIED FOR ANY PHYSICAL DAMAGE AT THE CRIMPED AREA. ENSURE THAT THERE IS NO SHARP EDGES OR BURR PRESENT AT THE CRIMPED AREA. RANDOM SAMPLE MAY BE SUBJECTED TO PULL OFF LOAD TEST. CRIMPED JOINT SHOULD NOT FAIL AT THE MINIMUM PRESCRIBED LOAD OF 15KGF.
- 7) FOR CRIMPING SMALLER CONNECTORS UPTO AWG #4 SIZE HAND OPERATED MANUAL HAND TOOLS CAN BE USED. EVEN A PNEUMATIC OR ELECTRIC MOTOR DRIVEN TOOL CAN BE USED FOR THE SAME APPLICATION. FOR HIGHER SIZES HYDRAULIC COMPRESSION HEAD CAN BE USED ALONG WITH MANUAL HYDRAULIC PUMPS, ELECTRIC/ BATTERY POWERED MOTOR DRIVEN HYDRAULIC PUMP CAN BE USED. THE OUTPUT FORCE FOR SUCH PUMPS SHOULD BE MINIMUM 10000 PSI. SELF CONTAINED HYDRAULIC TOOLS LIKE MANUAL HYDRAULIC OR BATTERY OPERATED TOOLS ALSO CAN BE USED.



The Trustworthy  Products



CORPORATE OFFICE & WORKS :

"Crystal House", Behind Blue Berry Industrial Estate, Meenakshi Industrial Area, Naik Pada, Waliv Village, Vasai Road (E), Dist. Thane - 401 208, Maharashtra (INDIA).

Tel.: +91-250 -2458792 / 93 / 94 / 2450 339 / 3295850 / Fax : +91-250-2451592 / 2458796

Email: info@groupcrystal.com / Website : www.groupcrystal.com / www.crystalexports.in