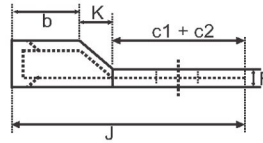
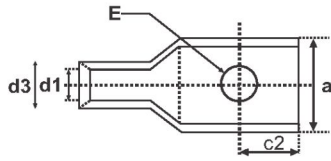


COPPER ONE HOLE SHORT BARREL SERIES COLOR CODED



File No.: E328465

CAT NO.	Wire Range	Stud Size	Colour Code	d1	d3	J	b	a	F	E	c2	c1 + c2	K	TOOL & DIE REFERENCE	NO. OF CRIMPS	STRIP LENGTH
CE 001	8	#10	RED	4.4	6.9	30.5	12.5	10.7	2	5.3	7	15	3	M=MH-14	2	10mm
CE 002		1/4	RED							6.4						
CE 003	6	#10	BLUE	5.2	7.5	38.0	18.0	10.7	2.1	5.3	7.5	17	3	M=MH-14	2	16mm
CE 004		1/4	BLUE							6.4						
CE 005		5/16	BLUE							8.4						
CE 006	4	#10	GREY	6.4	8.7	38.0	18.0	12.4	2	5.3	8	17	3	I=ECO50 DIE.UL087	2	16mm
CE 008		1/4	GREY							6.4						
CE 009		5/16	GREY							8.4						
CE 010		3/8	GREY							10.5						
CE 010A		3/16	GREY							5						
CE 011	2	1/4	BROWN	8	10.7	45.6	21	15.3	2.6	6.4	9.4	20.6	4	I=ECO50 DIE.UL107	1	19mm
CE 012		5/16	BROWN							8.4						
CE 013		3/8	BROWN							10.5						
CE 014	1	1/4	GREEN	9.1	11.9	46.6	21	17.1	2.7	6.4	9.4	20.6	5	I=ECO50 DIE.UL119	1	19mm
CE 015		5/16	GREEN							8.4						
CE 016		3/8	GREEN							10.5						
CE 017	1/0	1/4	PINK	9.9	13.2	46.6	21	18.9	3.2	6.4	9.4	20.6	5	I=ECO50 DIE.UL132	1	19mm
CE 018		5/16	PINK							8.4						
CE 019		3/8	PINK							10.5						
CE 019A		1/2	PINK							13						
CE 019AR		3/8	PINK							11						
CE 020	2/0	1/4	BLACK	11.2	14.3	57	24	20.7	3	6.4	12	27	6	I=ECO50 DIE.UL143	1	21mm
CE 021		5/16	BLACK							8.4						
CE 022		3/8	BLACK							10.5						
CE 023		1/2	BLACK							13						
CE 024	3/0	1/4	ORANGE	12.5	15.8	60	25	22.9	3.2	6.4	12	27	8	I=ECO50 DIE.UL158	1	21mm
CE 025		5/16	ORANGE							8.4						
CE 026		3/8	ORANGE							10.5						
CE 027		1/2	ORANGE							13						
CE 027R		1/2	ORANGE							13						
CE 027AR		3/8	ORANGE							10.5						
CE 028	4/0	1/4	PURPLE	13.9	17.5	60	25	25.4	3.4	6.4	12	27	8	I=ECO50 DIE.UL175	1	21mm
CE 029		5/16	PURPLE							8.4						
CE 030		3/8	PURPLE							10.5						
CE 031		1/2	PURPLE							13						
CE 032	250	3/8	YELLOW	15.1	19.1	63	27	27.7	3.8	10.5	12	27	9	I=ECO50 DIE.UL191	2	25mm
CE 033		1/2	YELLOW							13						
CE 034	300	1/2	WHITE	16.7	20.7	63	27	30.2	3.8	13	13.2	27	9	I=ECO50 DIE.UL207	2	25mm
CE 035		5/8	WHITE							17						
CE 036	350	1/2	RED	17.8	22.2	66	28	32.4	4.2	13	13.2	27	11	I=REC-5510 DIE.UL222	2	26mm
CE 037		5/8	RED							17						
CE 038	400	1/2	BLUE	19.4	24.1	78.2	30	35.2	4.5	13	13.2	35	13	I=REC-5510 DIE.UL241	2	28mm
CE 039		5/8	BLUE							17						
CE 040	500	1/2	BROWN	21.2	27	83.2	35	39.1	5.5	13	13.2	35	13	I=REC-5510 DIE.UL270	2	32mm
CE 041		5/8	BROWN							17						
CE 042	600	5/8	GREEN	23.5	30.2	89	38	43.6	6.4	17	17.5	37	14	I=REC-5510 DIE.UL302	3	35mm
CE 042A		1/2	GREEN							13						
CE 042AR		5/8	GREEN							17						
CE 042BR		1/2	GREEN							13						
CE 043	750	5/8	BLACK	26.2	33.3	111	47	48.3	6.8	17	17.5	47	17	I=REC-5510 DIE.UL333	3	44mm

Terminals can be provided with or without inspection vents.

